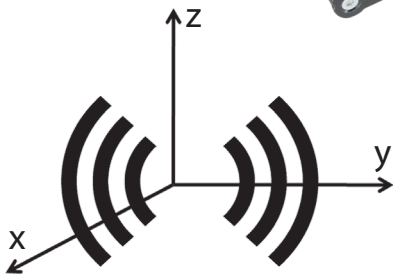
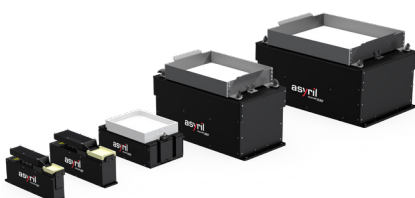
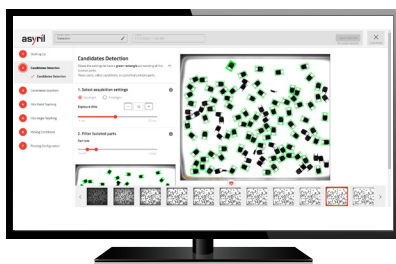


# EYE+

**The Smart Control System, the intelligence between Asycube and robot.** Control the hopper, Asycube, camera and the robot from the EYE+ Studio, a web based interface. EYE+ optimises the performance of your Asycube with integrated Artificial Intelligence based vision on a powerful controller.



**3-Axis Vibration Technology  
Innovation by asyril**



## Advantages

- ▶ **Easy to use:** No previous experience of machine vision required to setup and use EYE+ resulting in faster installation and lower setup costs.
- ▶ **Intuitive recipe creation and configuration:** User friendly interface, with step-by-step instructions and explanations, makes the software easy to follow. Have a complete new system with calibrated robot and vision setup within minutes. New recipes can be learnt in a fraction of the time compared to conventional models.
- ▶ **Plug and play:** Designed to easily integrate with any size of Asycube and any industrial robot for hassle free set-up. Simple direct connection and pre defined vision parameters with help tips and graphics mean installation, mounting and setup can be quickly performed without any prior experience.
- ▶ **All included:** Simply accessible via a web browser, no software download or additional licensing required. No 3rd party software or hardware required for a complete system
- ▶ **Attractive:** Highly competitive system costs compared to traditional solutions.
- ▶ **Compatible with any PLC & industrial robot brand:** Command prompts are sent through TCP/IP so EYE+ is compatible with any robot brand giving pick point location for any part.

# EYE+

## The Smart Control System, the intelligence between Asycube and robot.

### What is EYE+?

EYE+ consists of a compact controller, a high-resolution camera and a calibration plate. This plug and play system running on the easy to use EYE+ Studio web based interface that requires no in-depth knowledge of machine vision to run your flexible pick and place application. EYE+ Studio also makes it easy to configure the vision, perform hand-eye calibration, change recipes and program new parts.

### How it works?

Using the configuration wizard, EYE+ Studio set up in 3 easy steps:

- ▶ Vision configuration
- ▶ Create a new recipe
- ▶ Hand-eye calibration

During production, EYE+ controls all the different components of the application (Asycube, hopper, vision and robot).

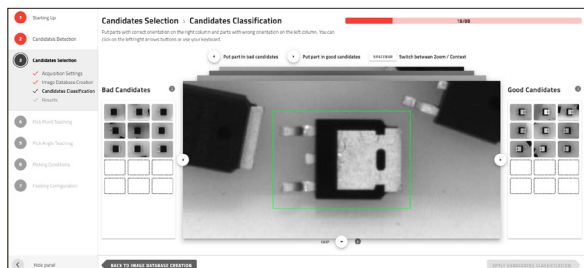
1. Switch on the hopper to feed the Asycube
2. Manage the right vibrations of Asycube
3. Detect correctly oriented parts
4. Pick parts from platform by robot



### EYE+ STUDIO

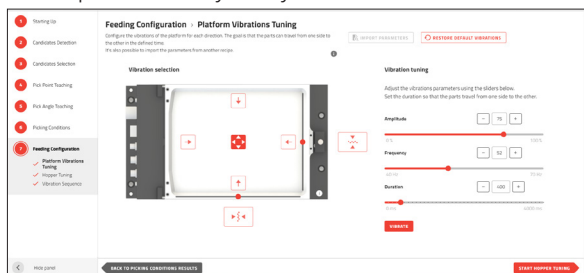
#### Candidates Selection – Candidates Classification

- ▶ Simply swipe left or right, good and bad parts.



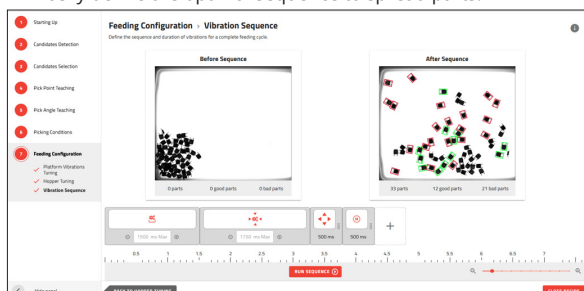
#### Feeding Configuration – Platform vibrations Tuning

- ▶ Complete control of your Asycube from EYE+ Studio.



#### Feeding Configuration – Vibration Sequence

- ▶ Easily define the optimal sequence to spread parts.

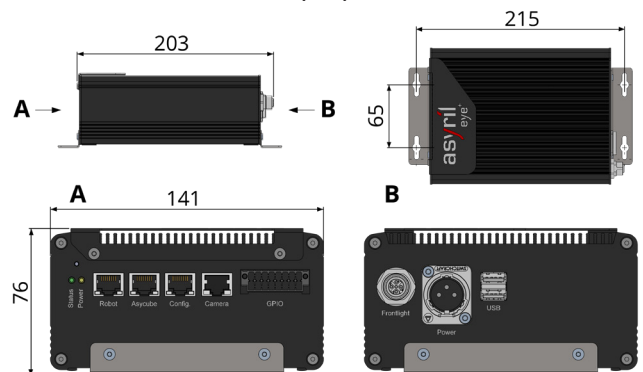


### Specifications

#### FEATURES

<b>All in-one kit</b>	Controller, camera, optics, calibration plate, power cable
<b>EYE+ Controller</b>	
Dimensions	141 x 187 x 71 mm
Weight	1.26 kg
Operating Temperature	+5°C to 40°C
Power	Voltage: +24VDC (+/- 5%) Current: 12.5 A max
<b>EYE+ camera</b>	High resolution (6.3 MP)
<b>Software</b>	EYE+ Studio
<b>Ethernet</b>	4x Gigabit Ethernet (PoE for the camera)
<b>Additional cables</b>	Ethernet cable to PLC or Robot, Ethernet cable for EYE+ Camera, Ethernet cable for Asycube Choice of length 2, 5, 10, 15 or 20 meters

#### DIMENSIONS IN MILLIMETERS (mm)



### Working Distance

Feeder	Near working distance		Far working distance	
	[mm]	[~inches]	[mm]	[~inches]
Asycube 530	900	35.43	1260	49.61
Asycube 380	810	31.89	1260	49.61
Asycube 240	790	31.10	1070	42.13
Asycube 80	580	22.83	850	33.46
Asycube 50	390	15.35	560	22.05



### About Asyriil

- ▶ Asyriil develops, produces and markets high performance flexible feeding systems for parts and components from <0.1 up to 150mm in size. Our innovative 3-axis vibration technology can handle bulk parts of any geometry and allows for extremely gentle part feeding.
- ▶ Asyriil's key competences and extensive know-how encompass all three sub-domains of modern part feeding systems: vibration technology, industrial vision and precision robotics. This unique focus combined with our many years of experience enable us to deliver superior, innovative flexible feeding systems for today and tomorrow's automation challenges.

### Contact

CoRobotics Sp. z o.o.  
ul. Zwolńska 102D  
04-761 Warszawa,  
Tel +48 22 299 00 80  
biuro@corobotics.pl  
www.corobotics.pl



scan to see the videos